



contacta 




# Window Intercom Systems

Enhance your customer service by aiding and improving your communication with customers



# Contents

	Section	Page
	Window Intercom Systems	
	Introduction	3
	Dual Speaker Pod System	6
	Speaker and Microphone Pod System	7
	Speaker Pod and Screen Mounted Mic System	8
	Dual Loudspeaker and Pod System	9
	Bridge Bar System	10
	Surface Mounted System	11
	Flush Mounted System	12
	Curved Microphone System	13
	Slimline Bridge Bar System	14
	Overhead Speaker System	15
	Dual Overhead Speakers Anti-Vandal Mic System	16
	Overhead Speaker Anti-Vandal Mic System	17
	Bent Screen-Mounted Microphone System	18
	IP54 Speaker and Microphone System	19
	IP55 Surface Mounted Entry System	20
	Components	21

# Is communication easy for your customers?

If easy communication can't take place, the **effects on your business could be severe.**

## Why should you improve your customer contact paths?

Conversations through safety screens at banks, post offices and other customer facing businesses are not effective without a system to aid them.

With the help of open duplex technology, speech can be transferred effectively through obstacles such as glazed partitions, meaning your customers and staff are guaranteed the best communication experience.

# How does technology transform interaction in your organisation?

The components of a **quality window intercom system** include an amplifier designed for optimum performance, high-quality speakers and well-positioned microphones, so that your customers and staff can **converse both freely and flawlessly**.



# Find out the benefits of our window intercom systems

- Unique multi-positional **noise cancelling microphone** for staff
- Range of options available to meet your needs for performance, positioning and image
- **Full open duplex operation** means no clipping of speech or manual control of speech path
- **Self-testing**, ensuring the system **stays fully functioning**
- High performance system with simple adjustable amplifier
- A hearing loop is provided as standard to perfect the listening experience for everyone
- **Unobtrusive** and **simple to install**
- Staff can be **heard clearly**
- More **engaging experience** for customers
- Transactions made simple and enjoyable



## Dual Speaker Pod System

This entry level window intercom system provides high quality sound across partitions and safety screens, featuring dual speaker pods which can be either free standing or surface mounted. Our open duplex amplifier and mouse microphone are included.

This system is suitable for environments with low to medium ambient noise.

**Please note:** A hearing loop aerial (page 32) is not included in the STS-K070-WL (without loop) or the STS-K070-L (loop compatible) kits. This optional accessory is only compatible with the STS-K070-L (loop compatible) model and will need to be purchased separately, in addition to the intercom kit.

### Applications:

For use where one to one communication takes place through a safety screen:

- Hospitals/Health Clinics/Surgeries
- Reception Counters
- Banks
- Retail Stores
- Embassies and Consulates

### What's Included:

- Window Intercom Amplifier (see page 21)
- Universal Microphone x2 (see page 36)
- Speaker Pod x2 (see page 23)
- PS-55 Power Supply (see page 38)

### Optional Extras:

- Counter Hearing Loop Aerial (see page 32)

### Physical Data:

Dimensions (boxed)	Height – 310mm (12.2") Width – 310mm (12.2") Depth – 160mm (6.2")
Construction	ABS Plastic
Finish	Black RAL 9005

### Product Codes:

Dual Speaker Pod System with Loop	STS-K070-L
Dual Speaker Pod System without Loop	STS-K070-WL



## Speaker and Microphone Pod System

This entry level window intercom system provides high quality sound across partitions and safety screens, featuring speaker and microphone pods which can be either free standing or surface mounted. Our open duplex amplifier and mouse microphone are included.

This system is suitable for environments with low ambient noise.

**Please note:** A hearing loop aerial (page 32) is not included in the STS-K071-WL (without loop) or the STS-K071-L (loop compatible) kits. This optional accessory is only compatible with the STS-K071-L (loop compatible) model and will need to be purchased separately, in addition to the intercom kit.

### Applications:

For use where one to one communication takes place through a safety screen:

- Ticket Offices
- Hospitals/Health Clinics/Surgeries
- Reception Counters
- Banks
- Retail Stores
- Embassies and Consulates

### What's Included:

- Window Intercom Amplifier (see page 21)
- Universal Microphone (see page 36)
- Staff Loudspeaker Pod (see page 22)
- Speaker Pod (see page 23)
- PS-55 Power Supply (see page 38)

### Optional Extras:

- Counter Hearing Loop Aerial (see page 32)

### Physical Data:

Dimensions (boxed)	Height – 310mm (12.2") Width – 310mm (12.2") Depth – 160mm (6.2")
Construction	ABS Plastic
Finish	Black RAL 9005

### Product Codes:

Speaker and Microphone Pod System with Loop	STS-K071-L
Speaker and Microphone Pod System without loop	STS-K071-WL



## Speaker Pod and Screen Mounted Microphone System

This entry level window intercom system provides high quality sound across partitions and safety screens. It features staff-side speaker and microphone pods which can be either free standing or surface mounted. Our open duplex amplifier and customer-side glass mounted microphone are included.

This system is suitable for a wide variety of environments.

**Please note:** A hearing loop aerial (page 32) is not included in the STS-K072-WL (without loop) or the STS-K072-L (loop compatible) kits. This optional accessory is only compatible with the STS-K072-L (loop compatible) model and will need to be purchased separately, in addition to the intercom kit.

### Applications:

For use where one to one communication takes place through a safety screen:

- Ticket Offices
- Hospitals/Health Clinics/Surgeries
- Reception Counters
- Banks
- Retail Stores
- Embassies and Consulates

### What's Included:

- Window Intercom Amplifier (see page 21)
- Screen Mounted Microphone with Bent Stem (see page 25)
- Staff Loudspeaker Pod (see page 22)
- Speaker Pod (see page 23)
- PS-55 Power Supply (see page 38)

### Optional Extras:

- Counter Hearing Loop Aerial (see page 32)

### Physical Data:

Dimensions (boxed)	Height – 310mm (12.2") Width – 310mm (12.2") Depth – 160mm (6.2")
Construction	ABS Plastic
Finish	Black RAL 9005

### Product Codes:

Spkr Pod Screen Mounted Mic System with Loop	STS-K072-L
Spkr Pod Screen Mounted Mic System without Loop	STS-K072-WL





## Dual Loudspeaker and Pod System

This entry level window intercom system provides high quality sound across partitions and safety screens, featuring speaker and microphone pods which can be either free standing or surface mounted. Our open duplex amplifier is included.

This system is suitable for environments with medium ambient noise.

**Please note:** A hearing loop aerial (page 32) is not included in the STS-K073-WL (without loop) or the STS-K073-L (loop compatible) kits. This optional accessory is only compatible with the STS-K073-L (loop compatible) model and will need to be purchased separately, in addition to the intercom kit.

### Applications:

For use where one to one communication takes place through a safety screen:

- Ticket Offices
- Hospitals/Health Clinics/Surgeries
- Reception Counters
- Banks
- Retail Stores
- Embassies and Consulates

### What's Included:

- Window Intercom Amplifier (see page 21)
- 2x Loudspeaker Pods (see page 22)
- PS-55 Power Supply (see page 38)

### Optional Extras:

- Counter Hearing Loop Aerial (see page 32)

### Physical Data:

Dimensions (boxed)	Height – 310mm (12.2") Width – 310mm (12.2") Depth – 160mm (6.2")
Construction	ABS Plastic
Finish	Black RAL 9005

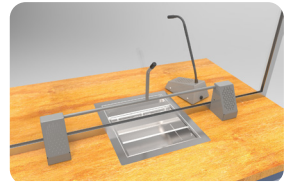
### Product Codes:

Dual Loudspeaker and Pod System with Loop	STS-K073-L
Dual Loudspeaker and Pod System without Loop	STS-K073-WL



## Bridge Bar System

This window intercom system features our most popular combined speaker and microphone module in a bridge bar style. It also includes our open duplex amplifier, a hearing loop, and a free-standing staff microphone and speaker unit. It is ideal for a variety of environments, whatever the ambient noise conditions.



### Applications:

For use in any situation where one to one communication is impaired by glass, a security screen, or similar barriers:

- Banks
- Post Offices
- Supermarkets
- Ticket Kiosks
- Information Centres
- Airports

### What's Included:

- Window Intercom Amplifier (see page 21)
- Bridge Bar Customer Unit (see page 30)
- Staff Loudspeaker Unit (see page 27)
- PS-55 Power Supply (see page 38)
- Counter Hearing Loop Aerial (see page 32)

### Physical Data:

Dimensions (boxed)	Height – 120mm (4.72") Width – 640mm (25.19") Depth – 340mm (13.38")
Weight (boxed)	3.72kg (8.20lbs)
Construction	Mild Steel
	ABS Plastic
Finish	Grey Powder Coated Leatherette
	Black Textured Powder Coated

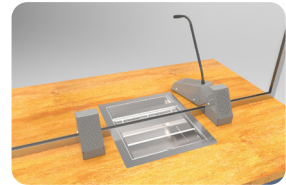
### Product Codes:

Bridge Bar System in Grey	STS-K001L-G
Bridge Bar System in Black	STS-K001L-B



## Surface Mounted System

This window intercom system features individual speaker and microphone units for the customer-side. This system also includes our open duplex amplifier, a hearing loop, and a free-standing staff microphone and speaker unit. It is suitable for quiet environments with low ambient noise.



### Applications:

For use in quiet environments where one to one communication is impaired by use of glass, a security screen, or similar barriers:

- Banks
- Post Offices
- Information Centres

### What's Included:

- Window Intercom Amplifier (see page 21)
- Surface Mounted Speaker and Microphone Modules (see page 28)
- Staff Loudspeaker Unit (see page 27)
- PS-55 Power Supply (see page 38)
- Counter Hearing Loop Aerial (see page 32)

### Physical Data:

Dimensions (boxed)	Height – 130mm (5.11") Width – 340mm (13.38") Depth – 240mm (9.44")
Weight (boxed)	2.90kg (6.39lbs)
Construction	Mild Steel
	ABS Plastic
Finish	Grey Powder Coated Leatherette
	Black Textured Powder Coated

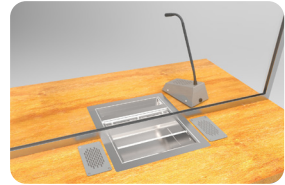
### Product Codes:

Surface Mounted System in Grey	STS-K002L-G
Surface Mounted System in Black	STS-K002L-B



## Flush Mounted System

This window intercom system features speakers that are mounted into the surface for a sleek look. It also includes our flush open duplex amplifier, a hearing loop, and a free-standing staff microphone and speaker unit. It is suitable for quiet environments with low ambient noise, and has been designed to prevent tampering in high-risk environments such as banks and prisons.



### Applications:

For use in quiet environments where one to one communication is impaired by use of glass, a security screen, or similar barriers:

- Banks
- Post Offices
- Information Centres
- Prisons

### What's Included:

- Window Intercom Amplifier (see page 21)
- Flush Speakers and Microphone (see page 28)
- Staff Loudspeaker Unit (see page 27)
- PS-55 Power Supply (see page 38)
- Counter Hearing Loop Aerial (see page 32)

### Physical Data:

Dimensions (boxed)	Height – 130mm (5.11") Width – 340mm (13.38") Depth – 240mm (9.44")
Weight (boxed)	2.46kg (5.42lbs)
Construction	Mild Steel
	ABS Plastic
Finish	Grey Powder Coated Leatherette
	Black Textured Powder Coated

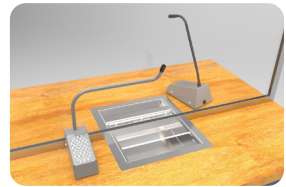
### Product Codes:

Flush Mounted System in Grey	STS-K003L-G
Flush Mounted System in Black	STS-K003L-B



## Curved Microphone System

This window intercom system features individual speaker and microphone units for the customer-side. It includes our open duplex amplifier, a hearing loop, and a free-standing staff microphone and speaker unit. It is a low space solution, ideal for a variety of environments with ambient noise.



### Applications:

For use in quiet environments where one to one communication is impaired by use of glass, a security screen, or similar barriers:

- Banks
- Post Offices
- Supermarkets
- Ticket Kiosks
- Information Centres
- Airports

### What's included:

- Window Intercom Amplifier (see page 21)
- Half Bridge Bar Unit (see page 31)
- Staff Loudspeaker Unit (see page 27)
- PS-55 Power Supply (see page 38)
- Counter Hearing Loop Aerial (see page 32)

### Physical Data:

Dimensions (boxed)	Height – 160mm (6.29") Width – 310mm (12.20") Depth – 300mm (11.81")
Weight (boxed)	2.62kg (5.77lbs)
Construction	Mild Steel
	ABS Plastic
Finish	Grey Powder Coated Leatherette
	Black Textured Powder Coated

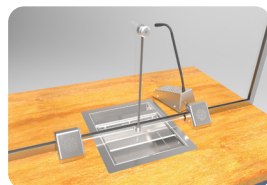
### Product Codes:

Curved Left Microphone System in Black	STS-K035-B
Curved Left Microphone System in Grey	STS-K035-G-LH
Curved Right Microphone System in Black	STS-K035-B-RH
Curved Right Microphone System in Grey	STS-K035-G-RH



## Slimline Bridge Bar System

This window intercom system features a slimline stainless steel bridge bar unit with a screen-mounted microphone. This system also includes our open duplex amplifier, a hearing loop, and a free-standing staff microphone and speaker unit.



It is a robust option, ideal for a variety of environments with ambient noise.

### Applications:

For use in any situation where one to one communication is impaired by use of glass, a security screen, or similar barriers:

- Banks
- Post Offices
- Supermarkets
- Ticket Kiosks
- Information Centres
- Airports

### What's Included:

- Window Intercom Amplifier (see page 21)
- Slimline Bridge Bar Unit (see page 30)
- Staff Loudspeaker Unit (see page 27) in Brushed Stainless Steel
- PS-55 Power Supply (see page 38)
- Counter Hearing Loop Aerial (see page 32)

### Physical Data:

Dimensions (boxed)	Height – 130mm (5.11") Width – 380mm (14.96") Depth – 320mm (12.59")
Weight (boxed)	3.72kg (8.20lbs)
Construction	Stainless Steel
	Mild Steel
	ABS Plastic
Finish	Brushed Stainless Steel
	Black Textured Powder Coat

### Product Code:

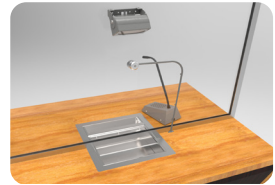
Slimline Bridge Bar System	STS-K060
----------------------------	----------



## Overhead Speaker System

This window intercom system features a bent vandal-proof glass mounted microphone for the customer side, along with a free standing microphone unit.

There is also a hearing loop facility included with this system which provides additional assistance for hearing aid wearers.



### Applications:

For use in any situation where one to one communication is impaired by use of glass, a security screen, or similar barriers:

- Banks
- Post Offices
- Supermarkets
- Ticket Kiosks
- Information Centres
- Airports

### What's Included:

- Window Intercom Amplifier (see page 21)
- Bent Vandalproof Microphone (see page 25)
- Staff Loudspeaker Microphone (see page 27)
- Overhead Speaker (see page 29)
- PS-55 Power Supply (see page 38)
- Counter Hearing Loop Aerial (see page 32)

### Physical Data:

Dimensions (boxed)	Height – 300mm (11.82") Width – 310mm (12.2") Depth – 160mm (6.22")
Weight (boxed)	2.8kg (6.17lbs)
Construction	Mild Steel
	ABS Plastic
Finish	Grey Powder Coated Leatherette
	Black Textured Powder Coat

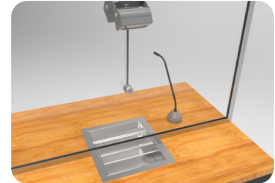
### Product Code:

Overhead Speaker System	STS-K061
-------------------------	----------



## Dual Overhead Speakers and Anti-Vandal Microphone System

This window intercom system features a mounted microphone for the customer side, a microphone with a round base for the staff side, and two surface mounted overhead speaker modules. It also includes our open duplex amplifier and a hearing loop.



### Applications:

For use where one to one communication takes place at a counter or booth with a security screen:

- Banks
- Post Offices
- Ticket Kiosks
- Information Centres
- Airports
- Supermarkets/Checkouts
- Pharmacies

### What's Included:

- Window Intercom Amplifier (see page 21)
- Anti-Vandal Microphone
- Flexible Gooseneck Microphone (see page 27)
- Surface Mounted Overhead Speaker x2 (see page 29)
- PS-55 Power Supply (see page 38)
- Counter Hearing Loop Aerial (see page 32)

### Physical Data:

Dimensions (boxed)	Height – 130mm (5.11") Width – 380mm (14.96") Depth – 320mm (12.59")
Weight (boxed)	4.08kg (8.99lbs)
Construction	Mild Steel
	Stainless Steel
	ABS Plastic
Finish	Grey Powder Coated Leatherette
	RAL 9006 Powder Coated Semi Gloss
	Black Textured Powder Coated

### Product Codes:

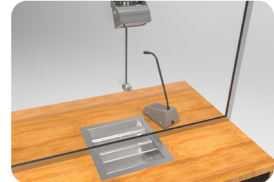
Surface Mounted Speaker System	STS-K062
--------------------------------	----------





## Overhead Speaker with Attached Anti-Vandal Microphone System

This window intercom system features a screen mounted microphone and overhead speaker for the customer side, along with a combined microphone and loudspeaker unit for the staff side. It also includes our open duplex amplifier, signage, and a hearing loop.



### Applications:

For use where one to one communication takes place at a counter or booth with a security screen:

- Banks
- Post Offices
- Ticket Kiosks
- Information Centres
- Airports
- Supermarkets/Checkouts
- Pharmacies

### What's Included:

- Window Intercom Amplifier (see page 21)
- Anti-Vandal Microphone
- Staff Loudspeaker Unit (see page 27)
- Surface Mounted Overhead Speaker (see page 29)
- PS-55 Power Supply (see page 38)
- Counter Hearing Loop Aerial (see page 32)

### Physical Data:

Dimensions (boxed)	Height – 130mm (5.11") Width – 380mm (14.96") Depth – 320mm (12.59")
Construction	Mild Steel
	Stainless Steel
	ABS Plastic
Finish	Grey Powder Coated Leatherette
	RAL 9006 Powder Coated Semi Gloss
	Black Textured Powder Coated

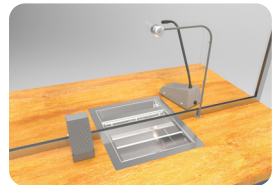
### Product Codes:

Surface Mounted Speaker System	STS-K064
--------------------------------	----------



## Bent Screen-Mounted Microphone System

This window intercom system features a bent vandal-proof glass mounted microphone for the customer side, along with a free standing microphone unit. There is also a hearing loop facility included with this system which provides additional assistance for hearing aid wearers.



### Applications:

For use in any situation where one to one communication is impaired by use of glass, a security screen, or similar barriers:

- Banks
- Post Offices
- Supermarkets
- Ticket Kiosks
- Information Centres
- Airports

### What's Included:

- Window Intercom Amplifier (see page 21)
- Screen Mounted Microphone with Bent Stem (see page 25)
- Surface Mounted Speaker (see page 28)
- Staff Loudspeaker Unit (see page 27)
- PS-55 Power Supply (see page 38)
- Counter Hearing Loop Aerial (see page 32)

### Physical Data:

Dimensions (boxed)	Height – 300mm (11.82) Width – 310mm (12.2") Depth – 160mm (6.22)
Weight (boxed)	2.8kg (6.17lbs)
Construction	Mild Steel
	ABS Plastic
Finish	Grey Powder Coated Leatherette

### Product Code:

Bent Screen-Mounted Mic System	STS-K058
--------------------------------	----------



## IP54 Speaker and Microphone System

This window intercom system provides high quality sound for entry assistance locations, delivery points, and other applications where one side is outdoors. Our IP54 rating makes this product perfectly suited to withstand harsh weather conditions and environments, offering protection against water, dust, and dirt ingress.

Our high quality microphone and speaker pick up minimal background noise, ensuring both the customer and staff side of the intercom can be clearly heard.

### Applications:

For use where one to one communication takes place at a counter or booth with a security screen:

- Outdoor access points (gates/security doors)
- Takeaway Booths
- Transport and Distribution Depots
- Ports and Ferry Terminals
- Car Parks/Parking Lots
- Medical, Helathcare and Mass Testing Facilities
- Drive-Through Services (food and beverage, retail, banking)

### What's Included:

- Window Intercom Amplifier (see page 21)
- Staff Loudspeaker Unit (see page 27)
- IP54 Overhead Speaker (see page 24)
- IP54 Stem Microphone (see page 24)
- PS-55 Power Supply (see page 38)
- Counter Hearing Loop Aerial (see page 32)
- Extension Cable (see page 39)

### IP54 Rated

- Customer Side IP54 rated against dust and water ingress. Water splashing against the enclosure from any direction shall have no harmful effect.

### Physical Data:

Dimensions (boxed)	Height – 120mm (4.72") Width – 640mm (25.19") Depth – 340mm (13.38")
Construction	Mixed
Finish	Mixed

### Product Code:

Speaker and Microphone System	STS-K080-IP
-------------------------------	-------------



## IP55 Surface Mounted Entry System

This outdoor intercom system provides high quality sound for entry assistance locations, delivery points, and other open-air applications. Our IP55 rating means that this product is perfectly suited to outdoor environments, offering protection against water, dust, and dirt ingress.

The surface mounted call unit is designed for installation at head height. The unit maintains an open, handsfree communication channel, while the call button on the front of the unit triggers an audible alert to inform staff of a customer's presence as required. It has an LED light to help users find the system in darkness.

Our high quality microphone and speaker pick up minimal background noise, ensuring both the customer and staff side of the intercom can be clearly heard.

### Applications:

For use outdoors where one to one communication takes place through a screen or barrier:

- Access points (gates, security doors, etc.)
- Takeaway booths
- Transport and distribution depots
- Ports and ferry terminals
- Car parks/parking lots
- Medical, healthcare, and mass testing facilities
- Drive-through services

### What's Included:

- Window Intercom Amplifier (see page 21)
- Surface Mounted Call Unit (see page 25)
- Staff Loudspeaker Unit (see page 27)
- PS-55 Power Supply (see page 38)
- Counter Hearing Loop Aerial (see page 32)

### Optional Extras:

Our Surface Mounted Call Unit [K009-IP] comes with a 3m length cable; for any larger distance installations a set of two of extension cables are required.

- CABLE-ST5-EX5M
- CABLE-ST5-EX10M
- CABLE-ST5-EX15M
- CABLE-ST5-EX20M

### Physical Data:

Dimensions (boxed)	Height – 120mm (4.72") Width – 640mm (25.19") Depth – 340mm (13.38")
Construction	Mixed
Finish	Black Powder Coated Leatherette

### Product Codes:

Surface Mounted Entry System	STS-K009-IP-L-B
------------------------------	-----------------



## Window Intercom Amplifier

Our amplifier provides full open duplex communication and is compatible with all of our speech transfer products.

**Note:** PS-55 Power Supply (see page 38) sold separately.

### Features:

- Energy-saving “green” standby mode is automatically used, achieving a power saving of up to 80%
- Constant-current hearing loop drive (with engineer adjustable hearing loop drive level)
- Isolated audio line input / output allows additional ohmically isolated line level audio input or output to recording system (bespoke, not available together)
- LED column indicator aids adjustments and indicates power and status
- Continuous self-testing means that no specialized equipment is required to confirm functionality
- DC Power: 2.1mm DC jack
- Power and status indication: Green/red LED column

### Technical Data:

Supply Voltage	12-14 VDC
Quiescent Current	100mA typical
Operating Current	2A typical on speech peaks
Power Switch	Push on - push off (tact switch under membrane)
Microphones	Electret, supply 5V via 2.2K $\Omega$ load resistor
Speaker Output Power	RMS: 2.5W / 8 $\Omega$ , 4.4W / 4 $\Omega$
Loop Drive Compliance	Constant current, bounded by 4Vrms & 3Arms
Total Harmonic Distortion	<5% (loop and speakers)

### Physical Data:

Dimensions	Height – 116mm (4.57") Width – 115mm (4.53") Depth – 40mm (1.57")
Weight	100g (0.22lbs)
Construction	ABS Plastic Construction Housing
Finish	Matt Black Fine Texture

### Product Code:

Window Intercom Amplifier	STS-A31H
---------------------------	----------



## Staff Loudspeaker Pod

Our combined speaker and directional microphone pod for the staff side can be either free standing or surface mounted. It provides high quality and uses a cardioid microphone.

### Physical Data:

Dimensions	Diameter – 110mm (4.3") Height – 330mm (12.9")
Weight	105g (0.23lbs)
Construction	ABS Plastic
Finish	Black RAL 9005

### Product Codes:

Staff Loudspeaker Pod	STS-SU2
-----------------------	---------

### Technical Data:

Speaker	RMS	5W
	Impedance	4Ω
	Output	SPL 1W @ 1M 85dB
	Frequency Response	150Hz - 10300Hz
Microphone	Directional Response	Cardioid
	Frequency Response	150Hz - 10500Hz
	Sensitivity	49.5dB+ 2dB @ 1kHz (0dB=1V/pa)
	Impedance	1.6K Ohms+ 3-% @ 1kHz



## Speaker Pod

This speaker pod provides high quality sound and can be either free standing or surface mounted.

### Physical Data:

Dimensions	Diameter – 110mm (4.3") Height – 30mm (1.18")
Construction	ABS Plastic
Finish	Black RAL 9005

### Technical Data:

RMS	5W
Impedance	4Ω
Output	SPL 1W @ 1M 85dB
Frequency Response	150Hz - 10300Hz

### Product Code:

Speaker Pod	STS-S70
-------------	---------

## IP54 Stem Microphone

This is our IP54 rated omnidirectional stem microphone, suitable for outdoor use. Screws and a double-sided sticky pad are included for installation.



### Physical Data:

Dimensions	Height – 36mm (1.41") Width – 36mm (1.41") Depth – 12mm (0.47") Stem - 300mm (11.8") Cable Length – 2m
Construction	ABS Plastic / Stainless Steel
Finish	Black Powdercoat

### Technical Data:

Directional Response	Omnidirectional
Frequency Response	100Hz - 20,000Hz
Sensitivity	-42dB +/- 3dB (0dB=1V/pa)
Impedance	2.2K

### Product Codes:

IP54 Stem Microphone	STS-M15-300IP
----------------------	---------------

## IP54 Overhead Speaker

An overhead IP54 rated speaker module designed to be used outdoors, can be fitted either overhead or vertically on the customer side.



### Physical Data:

Dimensions	Height – 153mm (6.02") Width – 106mm (4.17") Depth – 106mm (4.17")
Construction	Plastic / Metal
Weight	900g (1.98lbs)
Finish	Black Powdercoat

### Technical Data:

RMS	30W
Impedance	8Ω
Output	SPL @ 1W/ 1m 88dB
Frequency Response	120Hz - 20,000Hz

### Product Codes:

IP54 Overhead Speaker	STS-S80-IP
-----------------------	------------



# Screen Mounted Microphone w/ Bent Stem

A customer-side glass mounted microphone to provide high quality sound.



### Physical Data:

Dimensions	Height – 330mm (12.9") Width – 200mm (7.87") Depth – 25mm (0.98")
Weight	105g (0.23glbs)
Construction	Mild Steel
Finish	Black

### Technical Data:

Directional Response	Cardioid
Frequency Response	70Hz - 10300Hz
Sensitivity	-47 ±3dB @ 1kHz
Impedance	680 Ohms +/- @ 1KHz

### Product Codes:

Screen Mounted Mic. w/ B. Stem (Grey)	STS-M14-BENT
Screen Mounted Mic. w/ B. Stem (Black)	STS-M14-BENT-B

# IP55 Surface Mounted Call Unit

Our customer side speaker and omni-directional microphone set is mounted into a surface for a sleek look.



### Technical Data:

Speaker	Rated Power Input	15W
	Impedance	4 Ohm
	Sensitivity	SPL 1W @ 1M 84dB
	Frequency Response	100Hz – 20,000Hz
Microphone	Directional Response	Omnidirectional
	Frequency Response	100Hz – 20,000Hz
	Sensitivity	-42dB +/1 3dB @ 1kHz (0dB=1V/pa)
	Output Impedance	2.2K

### Physical Data:

Dimensions	Height – 184mm (7.2") Width – 124mm (4.8") Depth – 80mm (3.14") Cable length – 3m (8.3ft)
Construction	Mixed, Stainless Steel, Polycarbonate
Finish	Black Powder Coated Leatherette

### Product Codes:

IP55 Surface Mounted Call Unit	K009-IP
--------------------------------	---------



## Staff Loudspeaker Unit with Dual Mute Switch

Our free-standing combined speaker and directional microphone module for the staff side has an integral loudspeaker, microphone with a semi-rigid stem, adjustable neck and dual mute switch.

The dual mute switch gives the following options when used with a window intercom system:

- Sound working on both staff and customer sides of the counter
- Mute the staff side
- Mute both staff and customer sides

### Physical Data:

Dimensions	Height – 370mm (6.30") Width – 95mm (2.76") Depth - 150mm (3.94")
Weight	820g (1.80lbs)
Construction	Stainless Steel
	Mild Steel
Finish	Grey Powder Coated Leatherette
	Black Textured Powder Coated

### Technical Data:

Speaker	RMS	5W
	Impedance	4Ω
	Output	SPL 1W @ 1M 85dB
	Frequency Response	150Hz - 10300Hz
Microphone	Directional Response	Cardioid
	Frequency Response	150Hz - 10500Hz
	Sensitivity	49.5dB+ 2dB @ 1kHz (0dB=1V/pa)
	Impedance	1.6K Ohms+ 3-% @ 1kHz

### Product Code:

Staff Loudspeaker Unit Dual Mute Black	STS-SUI-3W-B
Staff Loudspeaker Unit Dual Mute Grey	STS-SUI-3W-G

## Staff Loudspeaker Unit

Our free-standing combined speaker and directional microphone module for the staff side has an integral loudspeaker, microphone with a semi-rigid stem, adjustable neck and mute switch.

### Physical Data:

Dimensions	Height – 370mm (6.30") Width – 95mm (2.76") Depth – 150mm (3.94")
Weight	820g (1.80lbs)
Construction	Mild Steel
	Stainless Steel
Finish	Grey Powder Coated Leatherette
	Black Textured Powder Coated
	Brushed Stainless Steel

### Product Codes:

Staff Loudspeaker Unit in Grey	STS-SUI-G
Staff Loudspeaker Unit in Black	STS-SUI-B
Staff Loudspeaker Unit in Stainless Steel	STS-SUI-SS



### Technical Data:

Speaker	RMS	5W
	Impedance	4Ω
	Output	SPL 1W @ 1M 85dB
	Frequency Response	150Hz - 10300Hz
Microphone	Directional Response	Cardioid
	Frequency Response	150Hz - 10500Hz
	Sensitivity	49.5dB+ 2dB @ 1kHz (0dB=1V/pa)
	Impedance	1.6K Ohms+ 3-% @ 1kHz

## Flexible Gooseneck Microphone

A free-standing directional microphone for the staff side, with a 300mm flexible gooseneck shaft and round base.



### Physical Data:

Dimensions	Diameter (base) – 70mm (2.75") Height – 340mm (13.38")
Weight	950g (2.09lbs)
Construction	Mild Steel
Finish	RAL 9006 Powder Coated

### Technical Data:

Directional Response	Cardioid
Frequency Response	150Hz - 10500Hz
Sensitivity	49.5dB+ 2dB @ 1kHz (0dB=1V/pa)
Impedance	1.6K Ohms+ 3-% @ 1kHz

### Product Code:

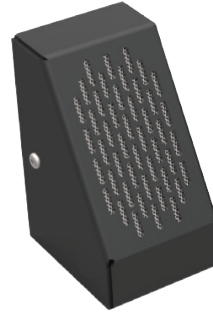
Flexible Gooseneck Microphone	STAFFMIC-01-NWB
-------------------------------	-----------------

# Surface Mounted Speaker and Microphone

Our customer side, free-standing speaker and omni-directional microphone modules.

## Technical Data:

Speaker	RMS	5W
	Impedance	4Ω
	Output	SPL 1W @ 1M 85dB
	Frequency Response	150Hz - 10300Hz
Microphone	Directional Response	Omni-Directional
	Frequency Response	100Hz - 5000Hz
	Sensitivity	-42.5 ± 2.0dB @ 1KHz (0dB=1V/pa)
	Impedance	2K Ohms +/- @ 1KHz



## Physical Data:

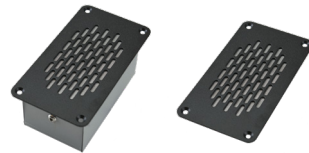
Dimensions	Height – 75mm (2.95") Width – 60mm (2.36") Depth – 110mm (4.33")
Weight	550g (1.21lbs)
Construction	Mild Steel
Finish	Grey Powder Coated Leatherette
	Black Textured Powder Coated

## Product Codes:

Surface Mounted Speaker in Grey	STS-S60-G
Surface Mounted Speaker in Black	STS-S60-B
Surface Mounted Microphone in Grey	STS-M54-G
Surface Mounted Microphone in Black	STS-M54-B

# Flush Speaker and Microphone

Our customer side speaker and omni-directional microphone set is mounted into a surface for a sleek look.



## Physical Data:

Dimensions	Height – 50mm (1.97") Width – 65mm (2.56") Depth – 120mm (4.72")
Weight	450g (0.99lbs)
Construction	Mild Steel
	Zintec Case
Finish	Grey Powder Coated Leatherette
	Black Textured Powder Coated

## Technical Data:

Speaker	RMS	5W
	Impedance	4Ω
	Output	SPL 1W @ 1M 85dB
	Frequency Response	150Hz - 10300Hz
Microphone	Directional Response	Omni-Directional
	Frequency Response	100Hz - 5000Hz
	Sensitivity	-42.5 ± 2.0dB @ 1KHz (0dB=1V/pa)
	Impedance	2K Ohms +/- @ 1KHz

## Product Codes:

Flush Speaker in Grey	STS-S61-G
Flush Speaker in Black	STS-S61-B
Flush Microphone in Grey	STS-M56-G
Flush Microphone in Black	STS-M56-B

# Overhead Speaker

An overhead sealed speaker module designed to be fitted above either the staff or customer side counters.



### Physical Data:

Dimensions	Height – 76mm (2.99") Width – 83mm (3.26") Depth – 110mm (4.33")
Weight	562g (1.15lbs)
Construction	Mild Steel
Finish	Powder Coated RAL 9006 Semi Gloss

### Technical Data:

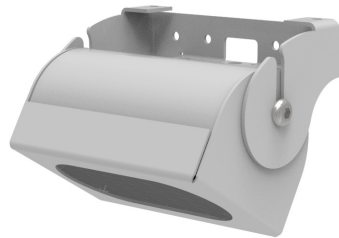
RMS	5W
Impedance	4Ω
Output	SPL 1W @ 1m 85dB
Frequency Response	150Hz - 10300Hz

### Product Code:

Overhead Speaker	STS-S22-G
------------------	-----------

# Surface Mounted Overhead Speaker

An overhead sealed speaker module designed to be fitted above either the staff or customer side counters.



### Technical Data:

RMS	5W
Impedance	4Ω
Output	SPL 1W @ 1m 85dB
Frequency Response	150Hz - 10300Hz

### Physical Data:

Dimensions	Height – 83mm (3.26") Width – 102mm (4.01") Depth – 90mm (3.54")
Weight	510g (1.12lbs)
Construction	Mild Steel
Finish	Powder Coated RAL 9006 Semi Gloss

### Product Code:

Surface Mounted Overhead Speaker	STS-S23-G
----------------------------------	-----------

# Bridge Bar Customer Unit

Our most popular combined speaker and directional microphone module, designed for the customer side.



### Physical Data:

Dimensions	Height – 245mm (9.64") Width – 620mm (24.4") Depth – 75mm (2.95")
Weight	1.44kg (3.17lbs)
Construction	Mild Steel
Finish	Grey Powder Coated Leatherette
	Black Textured Powder Coated

### Technical Data:

Speaker	RMS	5W
	Impedance	4Ω
	Output	SPL 1W @ 1M 85dB
	Frequency Response	150Hz - 11000Hz
Microphone	Directional Response	Cardioid
	Frequency Response	70Hz - 14000Hz
	Sensitivity	-67dB +/- 3dB @ 1kHz
	Impedance	1.6K Ohms +/- 30% @ 1KHz

### Product Codes:

Bridge Bar Customer Unit in Grey	STS-B80-G
Bridge Bar Customer Unit in Black	STS-B80-B

# Slimline Bridge Bar Unit

Our customer side slimline stainless steel bridge bar unit with a combined speaker and screen mounted directional microphone.



### Technical Data:

Speaker	RMS	5W
	Impedance	4Ω
	Output	SPL 1W @ 1M 85dB
	Frequency Response	150Hz - 11000Hz
Microphone	Directional Response	Cardioid
	Frequency Response	70Hz - 10300Hz
	Sensitivity	-47 ±3dB @ 1kHz
	Impedance	680 Ohms +/- @ 1KHz

### Physical Data:

Dimensions	Width – 581mm (22.8") Height – 431mm (16.9") Depth – 60mm (2.36")
Weight	1.44kg (3.17lbs)
Construction	Mild Steel
Finish	Brushed Stainless Steel

### Product Code:

Slimline Bridge Bar Unit	STS-B90-SS
--------------------------	------------



## Half Bridge Bar Unit

Our combined speaker and directional microphone for counters with reduced space.

### Technical Data:

Speaker	RMS	5W
	Impedance	4Ω
	Output	SPL 1W @ 1M 85dB
	Frequency Response	150Hz - 11000Hz
Microphone	Directional Response	Cardioid
	Frequency Response	70Hz - 14000Hz
	Sensitivity	-67dB +/- 3dB @ 1kHz
	Impedance	1.6K Ohms +/- 30% @ 1KHz

### Physical Data:

Dimensions	Height – 240mm (9.44") Width – 280mm (11.02") Depth – 130mm (5.11")
Weight	757g (1.67lbs)
Construction	Mild Steel
Finish	Grey Powder Coated Leatherette
	Black Textured Powder Coated

### Product Codes:

Curved Left Half Bridge Bar Unit in Black	STS-B94-LH-B
Curved Left Half Bridge Bar Unit in Grey	STS-B94-LH-G
Curved Right Half Bridge Bar Unit in Black	STS-B94-RH-B
Curved Right Half Bridge Bar Unit in Grey	STS-B94-RH-G



## Counter Hearing Loop Aerial

This hearing loop aerial for use with our Window Intercom Systems (see pages 6-20), which is fixed under desks or counters.

When connected to our Window Intercom Systems, it transmits a magnetic field which enables the telecoil in the hearing instrument to receive a signal from our hearing loop driver.

It is positioned within 1.2m of a user’s hearing instrument and fixed in place using self adhesive clips, P-clips or hot glue. It is flexible and can be moulded into your desired shape.

### Physical Data:

Dimensions	Can be moulded on site to required size/shape by installers
Weight	100g (0.22lbs)
Construction	Copper Wire with Black Protective Covering
Finish	Black PVC

### Product Code:

Counter Hearing Loop Aerial	IL-AE99
-----------------------------	---------





## Break Out Box

Our Break Out Box is used in addition or as a replacement to the staff unit. The box silences loudspeaker noise and allows staff to hear clearly through headsets. This product is a must have for busy ticket booths or service-points where ambient noise conditions are high.

A version with a mute button and an RJ11 socket is available for connection to an RJ11 direct plug-in connector (see page 34).

### Features:

- Push button mute switch
- Headset and handset connection
- Compact
- Easy to install
- Version with RJ11 connection available

### Technical Data:

Connections	Break Out Box (RJ11 Connection)	
	Headset Loudspeaker(s) and Microphone – B.O.B. Headphones and Microphone	RJ11 Connection
	Break Out Box (3.5mm Connection)	
	Headset Microphone – B.O.B. Microphone	3.5mm TRS Connection
	Headset Loudspeaker(s) – B.O.B. Headphones	3.5mm TRS Connection
	Break Out Box (3.5mm Jack & RJ11 Connection)	
	B.O.B. Microphone (Grey Sleeve) – STS-A31	2 pin Euro-block Connector
	B.O.B. loudspeaker (Black Sleeve) – STS-A31	2 pin Euro-block Connector
	Staff Loudspeaker Unit – B.O.B. MIC	2 pin Euro-block Connector
Staff Loudspeaker Unit – B.O.B. SPKR	2 pin Euro-block Connector	

### Applications:

For use in combination with a speech transfer system, in any situation where one to one communication takes place at a counter, booth or desk, such as in:

- Banks
- Post Offices
- Ticket Kiosks
- Information Centres
- Airports

### Physical Data:

Dimensions	Height – 20mm (0.79") Width – 117.6mm (4.63") Depth – 39mm (1.54")
Weight	100g (0.22lbs)
Construction	ABS Plastic
Finish	Black

### Product Code:

Break Out Box (3.5mm)	STS-SJB
Break Out Box (RJ11 Connection)	STS-SJB-RJ

## RJ11 1 Ear Headset and Microphone

The RJ11 1 Ear Headset and Microphone is a monoaural headset with a built-in noise cancelling boom microphone.

The headset is compatible with our Break Out Box (see page 33) as part of our Window Intercom Systems. It features a flexible microphone, a comfortable adjustable head band, and clear audio reproduction.

### Technical Data:

Connection		RJ11 direct plug-in
Microphone	Pattern	Electret
	Impedance	Max. 3.9K $\Omega$
	Sensitivity	-43 $\pm$ 3dB at 1kHz
	Frequency Range	100-10kHz
Speaker	Pattern	Dynamic moving coil
	Impedance	150 $\Omega$ / 300 $\Omega$
	Sound Pressure	94 $\pm$ 3dB / 91 $\pm$ 3dB at 1kHz
	Sound Intensity	80mW / 40mW
Frequency Range	300~3.4 kHz	



### Features:

- Supplied with an RJ11 direct plug-in connector

### Physical Data:

Weight	44g (0.1lbs)
Construction	ABS Plastic
Finish	Black

### Product Code:

3.5mm 1 Ear Headset and Microphone	HEADSET-1-RJ11
------------------------------------	----------------

## RJ11 2 Ear Headset and Microphone

The RJ11 2 Ear Headset and Microphone is a binaural headset with a built-in noise cancelling boom microphone.

The headset is compatible with our Break Out Box (see page 33) as part of our Window Intercom Systems. It features a flexible microphone, a comfortable adjustable head band, and clear audio reproduction.

### Technical Data:

Connection		RJ11 direct plug-in
Microphone	Pattern	Electret
	Impedance	Max. 3.9K $\Omega$
	Sensitivity	-43 $\pm$ 3dB at 1kHz
	Frequency Range	100-10kHz
Speaker	Pattern	Dynamic moving coil
	Impedance	150 $\Omega$ / 300 $\Omega$
	Sound Pressure	94 $\pm$ 3dB / 91 $\pm$ 3dB at 1kHz
	Sound Intensity	80mW / 40mW
Frequency Range	300~3.4 kHz	



### Features:

- Supplied with an RJ11 direct plug-in connector

### Physical Data:

Weight	44g (0.1lbs)
Construction	ABS Plastic
Finish	Black

### Product Code:

3.5mm 2 Ear Headset and Microphone	HEADSET-2-RJ11
------------------------------------	----------------

## 3.5mm 1 Ear Headset and Microphone

The 3.5mm 1 Ear Headset and Microphone is a monoaural headset with a built-in noise cancelling boom microphone.

The headset is compatible with our Break Out Box (see page 33) as part of our Window Intercom Systems. It features a flexible microphone, a comfortable adjustable head band, and clear audio reproduction.



### Technical Data:

Connection		2 x 3.5mm jacks
Microphone	Pattern	Electret
	Impedance	Max. 3.9KΩ
	Sensitivity	-43±3dB at 1kHz
	Frequency Range	100-10kHz
Speaker	Pattern	Dynamic moving coil
	Impedance	150Ω / 300Ω
	Sound Pressure	94±3dB / 91±3dB at 1kHz
	Sound Intensity	80mW / 40mW
Frequency Range	300~3.4 kHz	

### Physical Data:

Weight	44g (0.1lbs)
Construction	ABS Plastic
Finish	Black

### Product Code:

3.5mm 1 Ear Headset and Microphone	HEADSET-1-3.5
------------------------------------	---------------

## 3.5mm 2 Ear Headset and Microphone

The 3.5mm 2 Ear Headset and Microphone is a binaural headset with a built-in noise cancelling boom microphone.

The headset is compatible with our Break Out Box (see page 33) as part of our Window Intercom Systems. It features a flexible microphone, a comfortable adjustable head band, and clear audio reproduction.



### Technical Data:

Connection		2 x 3.5mm jacks
Microphone	Pattern	Electret
	Impedance	Max. 3.9KΩ
	Sensitivity	-43±3dB at 1kHz
	Frequency Range	100-10kHz
Speaker	Pattern	Dynamic moving coil
	Impedance	150Ω / 300Ω
	Sound Pressure	94±3dB / 91±3dB at 1kHz
	Sound Intensity	80mW / 40mW
	Frequency Range	300~3.4 kHz

### Physical Data:

Weight	44g (0.1lbs)
Construction	ABS Plastic
Finish	Black

### Product Code:

3.5mm 2 Ear Headset and Microphone	HEADSET-2-3.5
------------------------------------	---------------

# Universal Microphone

This is our omnidirectional microphone suitable for use on the customer side. Screws and a double-sided sticky pad are included for installation.



### Technical Data:

Directional Response	Omnidirectional
Frequency Response	20Hz - 20KHz
Sensitivity	-42±3dB
Impedance (Ω)	2.2K
S/N Ratio (dBA)	60

### Physical Data:

Dimensions	Height - 36mm (1.41")
	Width - 36mm (1.41")
	Depth - 12mm (0.47")
	Cable Length - 2m
Construction	ABS Plastic
Weight	39.9g (0.09lbs)
Finish	Black

### Product Code:

Universal Microphone	STS-M15
----------------------	---------

# Halo Microphone with Round Base

Our Halo Microphone with Round Base is on a round base for easy mounting, and is a compact, unobtrusive solution.

It features noise cancelling and a halo light indication at the base of the microphone stem. The halo lights up green when the system is working correctly and red when a fault is detected.



### Technical Data:

Directional Response	Cardioid
Frequency Response	70Hz - 14KHz
Sensitivity	-67dB +/- 3dB @ 1kHz
Impedance	1.6K Ohms +/- 30% @ 1KHz

### Physical Data:

Dimensions	Diameter (base) - 40mm (1.57")
	Height - 39mm (1.57")
Weight	37g (0.08lbs)
Construction	ABS Plastic
Finish	Pin Seal Texture

### Product Code:

Halo Microphone with Round Base	STS-M74-01
---------------------------------	------------



## Discreet Microphone

The Discreet Microphone is a compact solution for mounting to tills or computer screens.

It is fitted using an attached bolt and comes with a double-sided connector. It is also available with a right-angled bracket for fixing on to surfaces.

### Physical Data:

Dimensions	Height – 70mm (2.76") Width – 40mm (1.58") Length – 100mm (3.94")
Weight	65g (0.14lbs)
Construction	ABS Plastic
Finish	Satin Black

### Technical Data:

Directional Response	Cardioid
Frequency Response	70Hz - 14kHz
Sensitivity	-67dB +/- 3dB @ 1kHz
Impedance	1.6K Ohms +/- 30% @ 1KHz

### Product Codes:

Discreet Microphone	STS-M74
Discreet Mic. w/ Right-Angled Bracket in Grey	STS-M74-02
Discreet Mic. w/ Right-Angled Bracket in Black	STS-M74-02-B



## PS-55 Power Supply

The PS-55 Power Supply is a Level VI power supply for use with:

- Window Intercom Amplifier (see page 21)

Complies with UL, RCM, KC, FCC, CE (EMC), and CCC standards.

All power supplies come with a region-specific IEC lead 2 metres in length as standard.

### Physical Data:

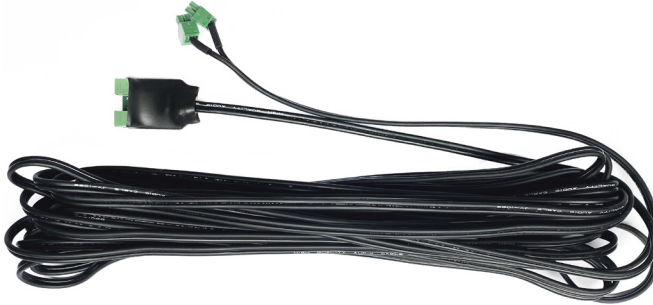
	PS-55 Power Supply	IEC Lead
Dimensions	Height – 93mm (3.66") Width – 49mm (1.93") Depth – 36mm (1.42")  Cable Length – 1.8m (70.87")	Cable Length – 2m (78.7")
Weight	180g (0.39lbs)	90g (0.2lbs)
Construction	ABS Plastic	PVC
Finish	Black	Black

### Technical Data:

Input	100-240V – 50-60Hz
Output	14V 2.14A 30W max.

### Product Code:

PS-55 Power Supply w/ IEC UK	PS-55-01-UK
PS-55 Power Supply w/ IEC Europe	PS-55-01-EU
PS-55 Power Supply w/ IEC Switzerland	PS-55-01-CH
PS-55 Power Supply w/ IEC US & Japan	PS-55-01-USJ
PS-55 Power Supply w/ IEC Australia	PS-55-01-AUS



## Window Intercom System Extension Cables

Our Window Intercom System Extension Cables for use with our Window Intercom Systems (see pages 6-20), enabling installations of staff and customer units at a distance of up to 20 metres. Compatible with Contacta Window Intercom Systems only.

### Physical Data:

	CABLE-ST5-EX5M	CABLE-ST5-EX10M	CABLE-ST5-EX15M	CABLE-ST5-EX20M
Length	5m	10m	15m	20m
Width	28mm			
Height	12mm			
Weight	125g	250g	375g	500g
Construction	Mixed			

### Product Code:

5m Extension Cables	CABLE-ST5-EX5M
10m Extension Cables	CABLE-ST5-EX10M
15m Extension Cables	CABLE-ST5-EX15M
20m Extension Cables	CABLE-ST5-EX20M



## Contact us now on:

☎ +44 (0) 1732 223900

✉ sales@contacta.co.uk

📠 +44 (0) 1732 223909

Contacta Systems Ltd  
Office 13, Dana Estate  
Transfesa Road  
Paddock Wood, Kent  
TN12 6UT  
United Kingdom

[www.contacta.co.uk](http://www.contacta.co.uk)